

Prof. Bogdan Gębski Ph.D.

University of Szczecin

Sociological pictures of the West-Pomeranian village

On the basis of research I will introduce the chosen characteristics of the empirical variables' distribution describing the categories *quality of life* of the country communities. Nonequivalence of this sociological category is defined by, among others, the mediation of the life standard, its level, life conditions, as well as subjective feelings. In many studies the measurement of the quality of life is defined through the selection of variables taking into account the demographic factors (e.g., the structure of age, population growth, etc.), the housing situation, the trade net, education, the protection of health, the level of safety (e.g., the number of theft, organized crime, plunder, etc.), transport and communication and the state of tracts, work market, recreation and rest, as well as many others. Many synthetic indicators combining several variables that are essentially approximate to each other, creating similar structures have been elaborated at the Institute of Research on Market Economy¹.

Therefore: the description of the *picture* of the quality of life includes the dimensions of: economy, education, feeling of safety, protection of health, participation in culture, housing conditions, system of communication, etc. Studying the respondents' certain knowledge, through their choices of answers on certain questions, it is possible to bring in also about the subjective feeling of the quality of their lives. Also the National Program Foresight Poland 2020² defining the balanced development of Poland determines the life quality using expressions: material, physical (health), social and psychological prosperity, the natural and artificial environment, the quality of life, demographic conditioning of the quality of life, social capital and social integration, the quality of life connected with health and the aging process.

In the report of the mentioned program, one underlines that in the richer countries of the European Union the differences in respect of the life quality in the city and in the country wear away. They are, however, clearer in the union countries of the Eastern Europe, where the satisfaction with one's payment is declared by less occupants of villages than cities, and where the level of the villages occupants' education is, as a general rule, lower.

Also, on the basis of research, other disturbing occurrences depending on the lack of equilibrium between professional life and the private life of UE citizens were noticed. Researchers' preliminary assumptions, in accordance with which this equilibrium ought to be kept, in larger degree in the case of people living in the country would not come true.

Conclusions resulting from the report have political implications because they have shown that village areas in poorer countries of the UE need an activating support ("rather the fishing-rod, than the fish"). Research, which the European Foundation for the Improvement Living and Working Conditions realized, have shown that the opinion - according to which the quality of life

¹ Por. M. Mackiewicz, E. Malinowska, W. Misiąg, A. Niedzielski, M. Tomalak, *Finanse publiczne w Polsce 1989 – 2001. Studium transformacji*, Instytut Badań nad Gospodarką Rynkową, Warszawa 2001.

² *First European Quality of Life Survey: Urban–rural differences*, European Foundation for the Improvement of Living and Working Conditions, Dublin 2006.

in the country is higher - is not true." The feeling of satisfaction " from the life "on the womb of ecology " does not recompensate the difficulties which the occupants of the village have to defeat.

In the following table the saturation of material goods from different sizes of social environments have been considered. Village has clearly lower indicatory values in relation to remaining environments.

The equipment of the household and place of residence of the respondents (in %)

Specification	In general	Large cities	Small cities	Village
Telephone	71,7	86,6	76,2	58,9
Refrigerator	96,3	97,3	98,0	94,4
Freezer	27,6	19,5	23,8	35,7
Dish-washer	2,2	2,0	2,2	2,3
Laundering machine	57,9	73,2	66,1	41,8
Washer	48,5	28,6	43,9	64,1
Vacuum cleaner	87,2	94,8	94,3	76,6
Radio	90,4	96,4	89,8	87,4
Color Television	89,8	94,6	93,9	83,6
Black and white television	9,7	6,6	9,6	11,5
Video	22,4	25,4	25,7	17,7

Source: P. Błędowski, *Gospodarstwa domowe i sytuacja mieszkaniowa ludzi starych*, poz. cyt., s. 134, w: *Polska starość*, red. B. Synak, Wyd. UG, Gdańsk 2002.

1. The reported below results of research were formed on the basis of empirical material obtained on the turning-point of years 1999-2000 and replenished in year 2007. Random selection of research sample is equal to 3213 families.

2. Organization of empirical research. Over 700 students took part in the research. Every student had conducted from 5 to 8 interviews with the members of a country family, that is, husband and wife. Sometimes, the filing of the questionnaire was accompanied by certain emotions connected with establishing some dates, e.g., how old was the husband or wife during the wedding day. Problem resulted from this, that the respondents earlier had given answers to the question about age (that is, how old are You) and the question concerning the age during the wedding day was asked after several questions. Mostly men had problems with settling their age. Except this, students were asked to write a short characteristic about a given locality according to the following dispositions:

- what general impression one has spending time in given village,
- is the majority of habitable and farm buildings neat or it rather undergoes devastation,
- are there new buildings, is someone leading a building investment,
- the appearance of streets, sidewalks, PKS stops, etc.,
- students in measure of possibility got from commune offices various documents and/or studies concerning a given village or communal area.

Many students delivered the studies (or xerox) of the reports that included rich profiles of a given village (or the communal): the number of population, the institutions, the surface of

agricultural soils. Some students manifested a larger activity delivering even materials recorded on a videotape. Many students "photographed" neighboring buildings³.

3. Degree of agreement of empirical distributions. The pertinence of the sample in respect to the age in comparison with the empirical distribution of the general list in year 2002 is as follows:

Distribution of the men and women's age in Poland and in research

Age	In Poland	Men		In Poland	Women
18-24	2304645	75		2226969	156
25-29	1468600	214		1426595	300
30-34	1247853	301		1212958	340
35-39	1234292	472		1210174	566
40-44	1452619	697		1456537	767
45-49	1531285	686		1576989	546
50-54	1340600	345		1432815	222
55-59	830446	140		938037	106
60 and more	2574985	248		3912968	178
Lack of data	-	35		-	32

t-Student (for men) = 0,000000239

t-Student (for women) = 0,000032064

d-Cohena = 1,7449

Comparing the number of men in women in suitable categories we can see that in many farm households single people are present (or not declaring marital relationship).

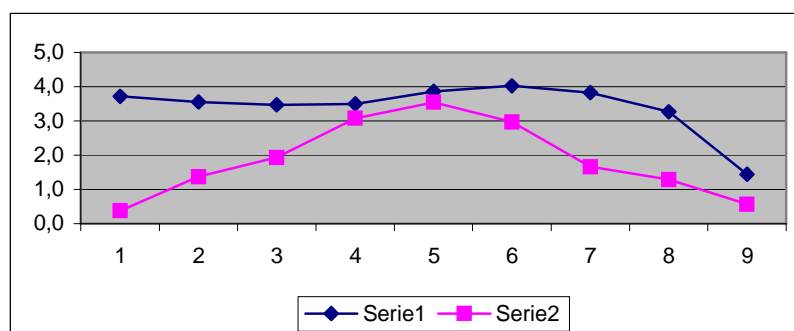
Proportions of the number of the West-Pomeranian country population to Poland as well as the studied number to the West-Pomeranian numbers

Age	Polish village	West-Pom.	Studied	% West. /Poland	% Studied /West-Pom.
18-24	1642857	61121	231	3,7	0,4
25-29	1053139	37409	514	3,6	1,4
30-34	953229	33103	641	3,5	1,9
35-39	963198	33710	1038	3,5	3,1
40-44	1068235	41301	1464	3,9	3,5
45-49	1028479	41389	1232	4,0	3,0
50-54	890599	34119	567	3,8	1,7
55-59	582732	19071	246	3,3	1,3
60 i więcej	5120391	73802	426	1,4	0,6
Lack of data			67		

t-Student (Poland and West-Pomeranian) = 0,014143769

t-Student (West-Pomeranian and studied) = 0,000069781

³ Por.: (Gębski, Charakterystyka ludności wiejskiej w pasie nadmorskim, 2005) and (Gębski, Jakość starości na tle jakości życia zachodniopomorskiej ludności wiejskiej, 2007)



In the age categories from 18 to 29 and in the age above 55 of the number of studied are "not represented". However, (the value t - Student) comparing the distribution of the empirical numbers of age categories, then a larger agreement between the studied and the Western Pomerania appears rather than West-Pomeranian and Poland. A more subtle discussion I carry out in a different, more spacious study.

The sociological pictures of the country are defined through mediation of suitable empirical distributions of chosen complexes of variables essentially creating certain wholes. I divided Western Pomerania into several areas, and the criterion of belonging to an area is the position of the commune. Area 5 (that is, administrative districts: pyrzycki, myśliborski, choszczeński and wałecki along with appendant communes) was distinguished in connexion with the conference's problems within the frames of the LIDER program and is characterized in the context of the remaining areas, as below:

- 1 - Polish - German borderland,
- 2 - Baltic borderland,
- 3 - administrative districts: świdwiński, białogrodzki, and koszaliński,
- 4 - the area of administrative districts goleniowski and stargardzki,
- 5 - **characterized area**, that is, administrative districts: pyrzycki, myśliborski, choszczeński and wałecki,
- 6 - administrative districts: drawski and szczecinecki,
- 7 - beyond province,
- 16 - lack of data.

The multidimensional characteristics of country local communities involves the value of distributions of empirical variables, as below:

1. Characteristics of age of the studied

To the most essential sociodemographic features belongs the age of the studied. I present in the following table the age of the studied families of the West-Pomeranian area. It is easy to notice that the degree of differentiation of empirical distributions of wives and husbands in the country environment is similar ($h = 0.947$ and 0.946) as well as these distributions are

significantly correlative ($d = 0.814$)⁴. Some of the observations put in the table contain certain "oddity", e.g., the husband is over fifty years old and the wife is under 24. Knowing the village realities one can indicate many marriages of a large age difference. These numbers are insignificant and do not have influence on the picture of correlation.

Age distribution of husbands and wives among studied

Husbands	Wives										Total
	18-24	25-29	30-34	35-39	40-44	45-49	50-54	55-59	60 i >	Brak	
18-24	70	5									75
25-29	66	136	9	2						1	214
30-34	12	124	143	17	2	1			2		301
35-39	2	24	151	258	31	3		2	1		472
40-44	1	4	32	234	389	31	2		2	2	697
45-49	1	2	2	41	303	312	18	1	3	3	686
50-54	1		6	30	170	4	124	8	1	5	345
55-59			1	1	6	20	68	41	3		140
60 i >	3	2		3	4	6	10	54	166		248
Brak		3	2	4	2	3				21	35
Total	156	300	340	566	767	546	222	106	178	32	3213

For variable: husbands $h = 0.947$; wives $h = 0.946$; d -Hellwiga = 0.814 ⁵

However, looking analogically at the age structure of men and women of the distinguished area 5 against a background of the remaining areas, regarding percentage shares of the studied in individual age categories, we can see that the 1-3 areas are characterized by a certain age continuity (particularly area 2 - the Baltic borderland). In the distinguished area 5 there is no regularity, what could be better demonstrated by applying symbolic markers {"w"} in the table's spaces when the condition becomes fulfilled: the percentage indicator is higher or equal in the given age category of the studied area in relation to the percentage indicator of the total studied, which we will interpret that there are structurally more or the same amount of people possessing a distinguished feature (category) in a given area compared with the analogical feature of the entire Western Pomerania structure. This too detailed discussion of the aspect of the data analysis is to be of service for a further shortened representation of suitable distributions of values of studied features with the omission of the less significant features of the sociological country picture.

⁴ Indicators h are defined by A. Góralski, and coefficient d -Hellwiga by him; por. B. Gębski, Wprowadzenie do programowania w naukach społecznych w językach BASIC i FORTRAN, Szczecin 1988.

⁵ Por.: B. Gębski, Sens socjologiczny podobnych strukturalnie zachodniopomorskich społeczności wiejskich-jakość życia, (w:) Od państwowych nieruchomości ziemskich do restrukturyzacji i prywatyzacji państwowych gospodarstw rolnych na Pomorzu Zachodnim, red. K. Kozłowski i L. Pałasz, Wydawnictwo „Dokument” Oficyna Archiwum Państwowego w Szczecinie, Szczecin 2006, s.189-208.

	Age of studied men										17
	18-24	25-29	30-34	35-39	40-44	45-49	50-54	55-59	60 & >	Lack	
Areas ⁶											
1	9	39	52	95	114	138	60	27	60	11	605
2	10	45	66	71	137	141	72	33	37	3	615
3	2	5	13	14	24	20	19	6	9	2	114
4	26	49	77	141	202	180	80	29	57	8	849
5	10	44	50	86	118	111	52	26	39	9	545
6	7	16	13	22	44	51	28	9	21	1	212
7	11	15	28	39	51	37	29	10	22	1	243
16	0	1	2	4	7	8	5	0	3	0	30
Total	75	214	301	472	697	686	345	140	248	35	3213

	Age of studied men										Total
	18-24	25-29	30-34	35-39	40-44	45-49	50-54	55-59	60 & >	Lack	
Areas											
1	1,49	6,45	8,60	15,70	18,84	22,81	9,92	4,46	9,92	1,82	100,00
2	1,63	7,32	10,73	11,54	22,28	22,93	11,71	5,37	6,02	0,49	100,00
3	1,75	4,39	11,40	12,28	21,05	17,54	16,67	5,26	7,89	1,75	100,00
4	3,06	5,77	9,07	16,61	23,79	21,20	9,42	3,42	6,71	0,94	100,00
5	1,83	8,07	9,17	15,78	21,65	20,37	9,54	4,77	7,16	1,65	100,00
6	3,30	7,55	6,13	10,38	20,75	24,06	13,21	4,25	9,91	0,47	100,00
7	4,53	6,17	11,52	16,05	20,99	15,23	11,93	4,12	9,05	0,41	100,00
16	0,00	3,33	6,67	13,33	23,33	26,67	16,67	0,00	10,00	0,00	100,00
Total	2,33	6,66	9,37	14,69	21,69	21,35	10,74	4,36	7,72	1,09	100,00

	Age of studied men									
	18-24	25-29	30-34	35-39	40-44	45-49	50-54	55-59	60 & >	Lack
Areas										
1				w		w		w	w	w
2		w	w		w	w	w	w		
6	⁶ Explanation: In the first column the next numbers signify the areas of the West-Pomeranian province: 1 – Polish-German borderland, 2 – Baltic borderland, 3 – administrative districts: świdwiński, białogrodzki, and koszaliński, 4 – area of administrative districts: goleniowski and stargardzki, 5 – characterized area, that is, administrative districts: pyrzycki, mysliborski, choszczeński and wałeccki, 6 – administrative districts: drawski and szczeciński, 7 – beyond province, 16 – lack of data.									
16					w	w	w		w	

On the example of the above mentioned tables we can to look at empirical distributions of the studied men's age categories and further also on the result of the "cut off" reasoning in relation to the women's age category and others, chosen component elements of the West-Pomeranian village picture.

	Age of studied women									
	18-24	25-29	30-34	35-39	40-44	45-49	50-54	55-59	60 & >	Lack
Areas										
1		w		w				w	w	w
2	w	w				w	w	w		
3			w		w	w	w	w	w	
4	w		w	w	w				w	
5		w	w		w					w
6	w					w	w	w	w	
7		w	w				w	w		
16					w	w	w	w		

After reducing the excess of information it is " visible " that in area 5 the age structures of men and women show a similar no continuity.

	Picture of the age of the studied									
	18-24	25-29	30-34	35-39	40-44	45-49	50-54	55-59	60 & >	Lack
Men		w		w				w		w
Women		w	w		w					w

2. Education of the studied

One of most essential features of the population is the possessed education. Investing in a given area (region) and connected with this places of work depend on this parameter. The lower the education, the more probable will be the investments connected with simple work, not demanding special, long-term trainings. Hence, in the frames of the Program LIDER Pojezierza, many places were dedicated to the support of the agricultural activity and processing industry.

Education of men and women in the studied families (Western Pomerania)

Wykształcenie kobiet									
Education	Elementary	Principle Professional education	High School	Technical School	College	Nonagricultural studies	Agricultural studies	Lack of data	Total
Elementary	384	118	52	16	3	6	0	14	593
Principle Pro.	198	695	341	159	33	53	0	29	1508
High School	16	72	172	25	8	38	2	2	335
Technical School	26	104	103	147	25	43	3	6	457
College	0	3	6	3	6	4	0	1	23
Nonagricultural studies	1	7	39	23	12	80	2	2	166
Agricultural studies	1	1	4	6	4	5	10	1	32
Lack of data	13	9	5	5	0	3	0	64	99
Total	639	1009	722	384	91	232	17	119	3213

From the above mentioned data it results that in the West-Pomeranian over 50% of the studied possess an elementary and principle professional education. It is visible also, that half the men possess a professional education, women are better educated at the level of high school, there is a balance on the level of technical education, and more women have a higher agricultural education. Let us look, in a similar way, at the education structures in the distinguished studied area.

By comparing numbers of particular spaces of the table to the totality of the studied expressed in percentage indicators, we can see a characteristic symmetry (and in some categories an asymmetry) of men and women's education in the West-Pomeranian. Men with a principle professional education preferred women with a similar education as well as high school and secondary technical education.

Education of men and women in the studied families (%%)

Women's education									
Men's education	Elementary	Principle Pro.	High School	Technical School	College	Nonagricultural studies	Agricultural studies	Lack of data	Total
Elementary	11,95	3,67	1,62	0,50	0,09	0,19	.	0,44	18,46
Principle Pro.	6,16	21,63	10,61	4,95	1,03	1,65	.	0,90	46,93
High School	0,50	2,24	5,35	0,78	0,25	1,18	0,06	0,06	10,43
Technical School	0,81	3,24	3,21	4,58	0,78	1,34	0,09	0,19	14,22
College	.	0,09	0,19	0,09	0,19	0,12	.	0,03	0,72
Nonagricultural studies	0,03	0,22	1,21	0,72	0,37	2,49	0,06	0,06	5,17
Agricultural studies	0,03	0,03	0,12	0,19	0,12	0,16	0,31	0,03	1,00
Lack of data	0,40	0,28	0,16	0,16	.	0,09	.	1,99	3,08

Total	19,89	31,40	22,47	11,95	2,83	7,22	0,53	3,70	100,00
-------	-------	--------------	--------------	-------	------	------	------	------	--------

The methodology of determining the percentage values was similar to above mentioned in relation to the studied of the distinguished area 5, that is, the studied from administrative districts: pyrzycki, myśliborski, choszczeński and wałecki. The difference in the men's education categories is the lack of after-high school education (college). The pictures of correlation of education are almost isomorphic among these studied to the totality of the studied.

In structures of the women and men's education, in the distinguished area, there is a lack of the category *college* educations on the men's side. This does not mean, in fact, that we will not find with no man with such education. In the studied sample no such persons were found.

Education of men and women in the studied families of area 5 (N=545)

Men's education	Women's education								
	Elementary	Principle Professional	High School	Technical School	College	Nonagricultural studies	Agricultural studies	Lack of data	Total
Elementary	15,23	5,14	2,02	0,73	0,18	0,18	.	0,37	23,85
Principle Pro.	6,06	21,28	10,28	5,32	0,18	2,02	.	0,55	45,69
High School	1,10	1,83	5,87	0,55	0,18	0,92	.	.	10,46
Technical School	0,55	3,12	2,57	4,77	.	0,73	0,18	0,37	12,29
Nonagricultural studies	.	0,18	0,55	0,92	0,92	1,10	.	0,18	3,85
Agricultural studies	0,18	.	0,18	.	0,18	0,18	.	.	0,73
Lack of data	0,55	0,37	.	0,18	.	.	.	2,02	3,12
Total	23,67	31,93	21,47	12,48	1,65	5,14	0,18	3,49	100,00

In the spaces of the following table I marked with the symbol "w" these percentage values, which are larger or even in the distinguished area in relation to the studied of the Western Pomerania. A next structure appeared "illustrating" education of these studied in the context of the totality of the studied.

Education of men and women in the studied families of area 5 (N=545)

Men's education	Women's education								
	Elementary	Principle Professional	High School	Technical School	College	Nonagricultural studies	Agricultural studies	Lack of data	Total
Elementary	w	w	w	w	w	.	.	.	w
Principle Pro.	.	.	.	w	.	w	.	.	.
High School	w	.	w	w
Technical School	.	.	.	w	.	.	w	w	.
Nonagricultural studies	.	.	.	w	w	.	.	w	.
Agricultural studies	w	.	w	.	w	w	.	.	.

Lack of data	w	w	.	w	.	.	.	w	w
Total	w	w	.	w

On the basis of the distinguished "higher" structural contributions in particular *mixtures of* education of the studied families in relation to the suitable structure for the total studied of Western Pomerania, we can infer that the potential of competence - on the basis of education - is among women. These women, after finishing technical school, accepted men from all categories of education. In a smaller but similar degree, women in the studied families with a high school and college education have husbands with different categories of education. We cannot see a similar or no regularity looking at the aspect of men's education on the dimension of women's education.

3. Structure of incomes

Analogically, to the presented analysis, we can look at the pictures of the structures of incomes in the studied families considering the distinguished area with the division of sex.

Husband's income													
X	to 400	<600	<800	<1000	<1200	<1400	<1600	<1800	<2000	<2200	>2200	Lack	Total
1	12	51	74	74	101	63	40	19	8	32	29	102	605
2	21	73	96	96	84	41	55	13	10	20	21	85	615
3	3	13	21	15	22	5	3	2	1	3	5	21	114
4	27	71	163	142	120	57	63	15	16	27	36	112	849
5	25	80	85	80	71	38	27	11	6	18	8	96	545
6	7	42	57	36	17	12	7	4	2	5	2	21	212
7	7	36	47	38	33	23	15	3	2	7	8	24	243
16	0	3	4	6	3	3	1	0	0	1	2	7	30
Σ	102	369	547	487	451	242	211	67	45	113	111	468	3213

Analyzing the structures of the men's earnings in the aspect of area 5, we also cannot see certain regular draughts "after compartments" of earnings in contrast to areas 1, 2, 4 and 6, what illustrates the following table.

Husband's income													
X	to 400	<600	<800	<1000	<1200	<1400	<1600	<1800	<2000	<2200	>2200	Lack	Total
1	-	-	-	-	w	w	w	w	-	w	w	w	-
2	w	w	-	w	-	-	w	w	w	-	-	-	-
3	-	-	w	-	w	-	-	-	-	-	w	w	-

4	w	-	w	w	w	-	w	-	w	-	w	-	-
5	w	w	-	-	-	-	-	-	-	-	-	w	-
6	w	w	w	w	-	-	-	-	-	-	-	-	-
7	-	w	w	w	-	w	-	-	-	-	-	-	-

Proceeding analogically with the women's earnings, the regularities are even more clearly marked in the income compartments. Women of the area 5 have extremely low declared incomes in relation to areas 1, 2 and 3, that is Baltic and Polish - German borderlands as well as administrative districts: świdwiński, białogardzki, and koszaliński.

Wife's income												
X	to 400	<600	<800	<1000	<1200	<1400	<1600	<1800	>1800	Lack	Total	
1	35	92	110	76	38	23	17	6	14	194	605	
2	50	93	101	76	41	13	20	1	14	206	615	
3	11	10	13	13	9	5	3	1	8	41	114	
4	66	183	153	82	46	11	15	0	15	278	849	
5	47	109	74	49	22	11	9	1	5	218	545	
6	26	49	38	14	2	5	3	1	2	72	212	
7	33	41	48	31	17	5	5	1	1	61	243	
16	2	8	2	4	1	0	2	0	2	9	30	
17	270	585	539	345	176	73	74	11	61	1079	3213	

Wife's income											
X	to 400	<600	<800	<1000	<1200	<1400	<1600	<1800	>1800	Lack	
1	-	-	w	w	w	w	w	w	w	-	
2	-	-	-	w	w	-	w	-	w	-	
3	W	-	-	w	w	w	w	w	w	w	
4	-	w	w	-	-	-	-	-	-	-	
5	W	w	-	-	-	-	-	-	-	w	
6	W	w	w	-	-	w	-	w	-	w	
7	W	-	w	w	w	-	-	w	-	-	

4. Structure of expenses

One should expect keeping similar pictures in the structure of expenses of the distinguished area in the background of the size of expenses of the studied of the Western Pomerania. Over half the studied bear costs on food below 600 zł monthly. Similarly is with the expenses on food among area 5 (that is, in administrative districts: pyrzyckim, myśliborskim, choszczeńskim and wałeckim).

Expenses on food													
	to 200	<300	<400	<500	<600	<700	<800	<900	<1000	<1100	>1100	Lack	Total
X													
1	6	20	54	89	103	85	55	71	25	58	28	11	605
2	19	39	74	93	112	92	52	52	16	41	22	3	615
3	5	9	12	15	29	26	4	4	1	6	3	0	114
4	32	46	124	143	168	120	75	53	7	51	21	9	849
5	21	44	69	108	110	90	39	24	10	22	6	2	545
6	6	11	42	41	40	27	20	13	3	7	2	0	212
7	6	22	50	37	40	30	18	17	5	6	8	4	243
16	1	1	2	5	3	6	2	3	1	1	4	1	30
17	96	192	427	531	605	476	265	237	68	192	94	30	3213

Expenses on food													
X	to 200	<300	<400	<500	<600	<700	<800	<900	<1000	<1100	>1100	Lack	Total
1	-	-	-	-	-	-	w	w	w	w	w	w	-
2	-	w	-	-	-	w	-	w	w	w	w	-	-
3	w	w	-	-	w	w	-	-	w	-	w	-	-
4	-	-	-	-	-	-	-	-	-	-	-	-	-
5	w	w	-	w	w	w	-	-	w	-	-	-	-
6	-	-	w	w	-	-	w	-	w	-	-	-	-
7	-	w	w	-	-	-	-	w	w	-	w	w	-
16	-	-	-	-	-	w	-	w	w	-	w	w	-

It is possible to notice the characteristic shift in the pictures of the continuity of the expenses of the distinguished area 6 in comparison with areas 1 and 2 (the borderland), although, the expenses of area 6 are in the section to 700 złotych and on the borderlands from 700 to over 1100 złotych. Attention occurs concerning the prices in the periods of the summer seasons, particularly at see.

Last of all, I will give a general structure of expenses to the structure of earnings, what illustrates the following table.

Sum of the family's expenses and the total income

Family income																	
Expenses	T	4	8	1	1	2	2	2	3	3	4	4	4	5	>	l	t
	o	0	0	2	6	0	4	8	2	6	0	4	8	2		a	o
	4	1	1	0	0	0	0	0	0	0	0	0	0	0	5	c	t
	0	-	-	1	1	1	1	1	1	1	1	1	1	1	6	k	a
	0	8	1	-	-	-	-	-	-	-	-	-	-	-	0		l
	0	0	2	1	2	2	3	3	4	4	4	5	5	5	0		
	0	0	0	6	0	4	8	2	6	0	4	8	2	6			
			0	0	0	0	0	0	0	0	0	0	0	0			
			0	0	0	0	0	0	0	0	0	0	0	0			
<100	1		1													2	4
<200		2	3													1	6
<300	10	7	3	2												7	29
<400	25	12	4	3		2										9	55
<500	22	32	7	4	1		1	1								13	81

<600	41	59	34	8	4	1				1						20	168
<700	23	78	41	18	3	1	1	1	1							23	190
<800	42	98	63	14	13		1		1							41	273
<900	42	83	69	24	13	4	2	2								28	267
<1000	33	80	80	29	10	10	4	1								25	272
>1000	101	261	391	325	259	111	80	39	12	18	11	13	6	2	6	230	1865
Lack	1															2	3
Total	341	712	696	427	303	129	89	44	14	19	11	13	6	2	6	401	3213

For variable: expenses $h = 0.692$; earnings $h = 0.904$; d-Hellwiga = 0.441

It is easy to notice a certain apparent inconsistency in the structure of expenses and total earnings. Many families in the country spend more than earn. The empirical distribution of expenses is strongly diverse ($h = 0.692$) in comparison to distribution of incomes ($h = 0.904$). Correlation of these variables is comparatively low ($d = 0.441$). Respondents' reactions to the questions about earnings and expenses are situated in the bottom triangle of the above mentioned table.

In the following two tables certain information, that indicate sources of additional income, are included. Often happens, such a situation, that for the so called "care" over an older pensioner practically her entire pension or retiring is collected and it is included in the general costs of maintaining a household - sometimes the whole family waits for the postman bringing the pension (retiring). I know many facts like this, that this type of care includes two or three people living alone in the country - most often they are widows, which are "taken care of" by married related persons.

Taking additional jobs

Husbands	Wives				Total
	No	Sometimes	Yes	Lack	
No	1201	157	61	71	1490
Sometimes	531	299	66	55	951
Yes	251	117	222	22	612
Lack	23	23	18	96	160
Total	2006	596	367	244	3213

For variable: husbands $h = 0.878$; wives $h = 0.743$; d-Hellwiga = 0.512

Among the studied, one third does not undertake additional jobs (1201 families). More husbands undertake jobs casually and regularly (1486) in comparison with wives (922). I also asked about the incomes (work, pension or retiring) of parents of the studied husbands and wives. Suitable data below.

Sources of parents' income of the studied

From the husband's side	From the wife's side			Total
	No	Yes	Lack	
No	488	198	8	694
Yes	223	1888	108	2219
Lack	3	139	158	300
Total	714	2225	274	3213

For variable: husband $h = 0.701$; wife = 0.696; d-Hellwiga = 0.618

Trying for a benefit or financial aid

Husband's efforts	Wife's efforts			Lack	Total
	Yes	Few times	No		
Yes	321	32	47	16	416
Few times	20	159	23	13	215
No	175	79	1548	21	1823
Lack	132	91	525	11	759
Total	648	361	2143	61	3213

For variable: husband $h = 0.801$; wife $h = 0.669$; d-Hellwiga = 0.556

Almost half of the studied (1548 studied families) did not try for material help from suitable help institutions. Husbands together got such help in 631 cases and wives in 1009 cases.

A general regularity in the West-Pomeranian country is the material help from the parents' side of the studied. The above mentioned data illustrate a "profitable activity". In turn, to the question: do parents of the studied live with them, answers shaped as in following table.

Parents of the studied living together

From the husband's side	From the wife's side			Total
	No	Yes	Lack	
No	2360	295	28	2683
Yes	319	74	24	417
Lack	12	38	63	113
Total	2691	407	115	3213

For variable: husband $h = 0.427$; wife = 0.422; d-Hellwiga = 0.325

Together in 750 cases (23.3 %) in a common household live the parents of the studied from the husband or wife's side, in this 74 families are looking after persons from both families of origin.

The evaluation of the life level in the country and perspectives of the children's settlement of the studied

Evaluation of the life in the country	Will the children live in the country			Lack of data	Total
	No	I don't know	Yes		
It is difficult for us	149	312	68	42	571
Keep „one's head above water"	163	492	66	34	755
Temporary difficulties	157	456	58	23	694
We manage just „fine"	228	536	74	41	879
It is ok	85	168	29	10	292
Lack of data	8	12	1	1	22
Total	790	1976	296	151	3213

For variable: evaluation $h = 0.940$; perspectives $h = 0.734$; d-Hellwiga = 0.228

The subjective evaluation of the quality of life in the country in the space of the mentioned categories is comparatively little diversified ($h = 0.940$), that means, that it is difficult to point out the clear positive or negative aspect. The low correlation of the mentioned variables ($d = 0.228$) confirms the conviction about binding to the village little perspectives for own children.

The evaluation of the life level in the country of the people over the age of 60 and perspectives of the children's settlement of the studied

Evaluation of the life in the country	Will the children live in the country			Lack of data	Total
	No	I don't know	Yes		
It is difficult for us	30	12	10	17	69
Keep „one's head above water”	20	12	12	12	56
Temporary difficulties	17	16	6	7	46
We manage just „fine”	17	17	10	16	60
It is ok	9	2	2	2	15
Lack of data	2				2
Total	95	59	40	54	248

For variable: 47 h = 0.930 53 h = 0.964 d-Hellwiga = 0.360

In over 56 thousands villages in the scale of the whole country, the life of the population manifests itself in very diverse forms of condition standards. Over 46% of total occupants of villages live in agglomerations up to 200 occupants, 35% of the population concentrate in communities from 200 to 500 occupants, the remaining in a larger number of country local communities. Small country environments as a rule, are poor in any social institutions. Until quite lately, only the church and school belonged to the typical scenery of the cultural country environment. In the present situation, after the liquidation of a considerable number of school posts, the church building remains.

Half of the people coming from the village and living in the village are the people with an elementary education, and every third person identifies himself with a principle professional education. Only 3% has a higher education. Slightly better shaped is the education structure among the inflowing occupants of village. The largest number among them make up the people with a secondary education, whereas the amount of people, which are educated on the elementary level do not deviate from the average in the society.

* * *

In the context of the touched problems one can indicate certain area of research questions on the country environments:

1. Let the research object be the peculiarity of the country community⁷, on which consists the gathering of the families living in relatively compact buildings. The mere isolation of the family as a sociological individual discloses the problems connected with the selection of criterions. It turns out, that family connections are something different in the country, where, for example, two brothers are in family relationships, which family members meet every day, as well as the similar family arrangement in city conditions. In this second case, the "family" is created rather by people of similar experiences in local work environments,
2. "The redistribution" of the pension / retiring - it is one of the most dramatic forms of the conflict in the situation of the multi-generation family in the country. The demands towards the person possessing a stable source of income [pension, retiring] to relinquish almost the whole sum for the benefit of their unemployed children or grandchildren is a

⁷ B. Gębski: Osobliwość kulturowa rodziny. Razem czy osobno..., [w:] Współczesne rodziny polskie w okresie radykalnych zmian społecznych (red. L. Janiszewski), Szczecin 1998.

commonplaceness. It is upsetting that an older, sick, waiting for those 500 zł person has to give up satisfying one's needs because among her two (or more) children lasts an oral auction of needs and due titles,

3. The many years of negligence of the state of the farms - purchasing for a low price - establishing a type of proprietary flat and other administrative rooms of a low standard forces the current owner to a serious repairs investment. Often children purchase such a household for their parents in order to ensure them a relative feeling of housing safety,
4. Conflicts of a cultural origin - inhering reluctance to co-operation and integration. The damaged "natural" mechanism of cultural integration, a type of the country common room, as well as in recent times the liquidation of elementary schools often causes conflicts over the remains of the cultural institutions in these environments,
5. Cultural loneliness - conflict appears in the situation of negligence of the older person (father, mother) by the children living in a nearby city. Conflict has two forms: [a] envy that the neighbor's children come and help in the household chores and [b] mutual discrediting by the neighbors concerning the results of bringing up own children. Both of these forms of conflict often give an expression in pretensions towards own children, as a rule, entangled in one's own obligations,
6. Concealed conflict [a] - appears in a direct neighborhood. The sides mutually observe each other and "they lie in wait" for faults in ritual behaviors preserved for many years. A typical behavior is "pretending" to not see the neighbor or the neighbor "pretends" that he does not see and does not bow in time,
7. Concealed conflict [b] - "terror of gray eminence". The specific form of this conflict depends on people of a given village behaving oddly in relation to strangers, who want something. In a, for example, pre-election period candidates for councilors cannot leave their election materials in public locals (store, cafe, pump-room of beer, etc.). Enumerators cannot conduct interviews meeting with refusal. It turns out, that for years the local councilor is simultaneously a resilient tradesman. People supply themselves in basic products "on a book" and in a convenient time they regulate financial obligations. Everyone, who in one's behaviors will leave from a preserved stereotype will not be able to use this type of privileges. Democratic processes in described environments were not initiated yet.
8. Children's promotion, where they settled, do they often visit their relatives and in what cars they arrive. It is a frequent reason for pride for one of the village's occupants and sorrow as well as hatred for others,
9. Unemployment - conflict "does someone have work" - "is there no work". Every additional sources of income are a subject of speculation on the topic of wealth in families that are more socially active,
10. Fear concerning the consequences of entering to the European Union. Fear concerning the purchase of all village areas by a foreign capital. Simultaneously, there where is an opportunity selling the housing substance (often the subject of sale are magnificent, but untidy manor-houses, etc),
11. Medical care - selection and social acceptance of the doctor - flat for the doctor.

* * *

The present West-Pomeranian village (Pomeranian and Mazurian) as well as these country areas, in which a preserved by many years life style characteristic for after of a state farm village or SHR experiences a serious social crisis. In the period of systematic transformation local communities of these villages indicate a social disorientation and helplessness towards one's own

future. "A characteristic outline of this village was also the family specifically connected with the institution. We had to deal here with women's larger professional activation, which had influence on the structure and functions of the family. The enterprise played an essential role in the family's life through work and its rhythms, as well as social and well-being protection"⁸.

After the year 1989, agricultural enterprises practically stopped to exist. In the village's realities, after of a state farm, a period of devastation of "nobody's" possessions appeared until the rise of the Agency of Agricultural Property Treasure State (1 January 1992), which though influenced partly the change of local communities relations towards possessed material supplies. Flat, administrative buildings which in a slow process of reprivatization became the property of the village's occupants, began a new process of taking responsibility for shaping perspectives of one's own lives.

References

- Błędowski P., Gospodarstwa domowe i sytuacja mieszkaniowa ludzi starych, (w:) *Polska starość*, red. B. Synak, Wyd. UG, Gdańsk 2002.
- First European Quality of Life Survey: Urban–rural differences, European Foundation for the Improvement of Living and Working Conditions, Dublin 2006.
- Gębski, B. (2005). Charakterystyka ludności wiejskiej w pasie nadmorskim. W *Roczniki Socjologii Morskiej* (Tom XVI, strony 65-73). PAN. Oddział w Gdańsku. Komisja Socjologii Morskiej.
- Gębski, B. (2007). Jakość starości na tle jakości życia zachodniopomorskiej ludności wiejskiej. W A. Kołodziej-Durnaś (Red.), *Region Zachodniopomorski - kolaż socjologiczny* (strony 73-90). Warszawa: Difin.
- Gębski B., Osobliwość kulturowa rodziny. Razem czy osobno..., [w:] *Współczesne rodziny polskie w okresie radykalnych zmian społecznych* (red. L. Janiszewski), Szczecin 1998.
- Gębski, B. (2005). Współczesny ewolucjonizm - przez ilość do jakości. W J. Leoński, & A. Kołodziej-Durnaś (Redaktorzy), *W kręgu socjologii interpretatywnej - zastosowanie metod jakościowych* (strony 103-108). Szczecin: Economicus.
- Landers, D. S. (2000). *Bogactwo i nędza narodów. Dlaczego jedni są tak bogaci, a inni tak ubodzy*. (B. Gruszka, Red., & H. Jankowska, Tłum.) Warszawa: Warszawskie Wydawnictwo Literackie MUZA.
- Mackiewicz, M., Malinowska, E., Misiąg, W., Niedzielski, A., & Tomalak, M. (2001). *Finanse publiczne w Polsce 1989-2001. Studium transformacji*. Warszawa: Instytut Badań nad Gospodarką Rynkową.
- Mycielski, M. (2005). *Miasto ma mieszkańców, wieś obywateli. Kajetana Koźmiana koncepcje wspólnoty politycznej (do 1830 roku)*. Wrocław: Wydawnictwo Uniwersytetu Wrocławskiego.
- Szpak, E. (2005). *Między osiedlem a zagrodą. Życie codzienne mieszkańców PGR-ów*. Trio.

Bogdan Gębski

Sociological pictures of the West-Pomeranian village (summary)

⁸

Ibidem

In the paper, on the basis of conducted research among 3213 families of the Western Pomerania village in years 1999-2000 and with regard to some aspects of the panel research led in year 2007 (August - November), I introduced some characteristic outlines of the *quality of life* of the country families. I also looked at empirical data defining the characteristic areas with respect to the local villages. I distinguished the following areas: 1 - Polish - German borderland, 2 - Baltic borderland, 3 - administrative districts: białogardzki and koszaliński, świdwiński, 4 - the area of administrative districts goleniowski and stargardzki, 5 - the **characterized area** (distinguished with regard to the problems of the conference), that is, the administrative districts: pyrzycki, myśliborski, choszczeński and wałecki, 6 - administrative districts: drawski and szczecinecki, 7 - beyond province. For the description of the quality of life I chose the following questions: characteristics of the age of the studied, education, structure of incomes, structure of expenses, additional sources of income, and the subjective evaluations of the level of life in the country including older people (after the age of 60). From necessity I limited myself to a modest number of dimensions of the country life. Last of all, I gave propositions of research problems, which can be found in my area of interests.